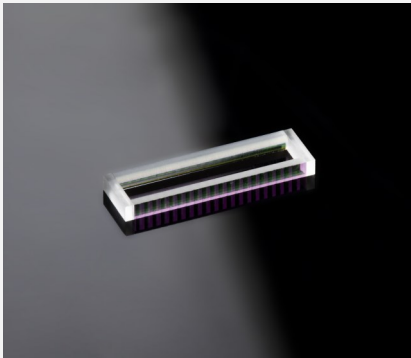


FAC-SACA Collimation Module

FAC910 with SACA for ES150/P500



Features and Advantages

Collimation module consisting of FAC910 and SACA 150-500 mounted with side tabs for the collimation of the fast and slow axis of diode lasers. Emitter size of up to 150 μm and emitter pitch 500 μm .

* Product similar to image, see product drawing below.

Product Specifications

| Specification Data | Unit | Value |
|--|-----------------|-----------------|
| Material | | S-TIH53 (Ohara) |
| Length (L) | mm | 13.0 \pm 0.25 |
| Width (W) | mm | 1.5 \pm 0.05 |
| Thickness (T) | mm | 2.65 \pm 0.05 |
| Clear aperture | mm ² | 11.0 x 1.34 |
| Back focal length BFL @ 808 nm | mm | 0.09 |
| Pitch | mm | 0.5 |
| Fast axis power within an angle of \pm 0.7 mrad ⁽¹⁾ | % | > 85 |
| Transmission | % | > 98 |

Product Code **MOD000376**⁽²⁾

| Specification Data | Unit | Value |
|--|------|----------------|
| AR-coating | nm | 790 - 990 |
| Remaining divergence (FW1/e ²) for slow axis | mrad | 90 (typically) |

⁽¹⁾ Valid for an emitter-height of 1 μm and no smile of the laser diode.

⁽²⁾ Example for customization – customized coating and bottom tab for mounting on request.

Product Dimensions (mm)

